



## Enterprise Multi-WAN Gigabit VPN Router GWN7000

The GWN7000 is a powerful enterprise-grade multi-WAN Gigabit VPN router. Ideal for the enterprise, small-to-medium business, retail, education, hospitality and medical markets, the GWN7000 supports comprehensive WiFi and VPN solutions that can be shared across one or many different physical locations. It features high-performance routing and switching power and a hardware-accelerated VPN client/server for secure inter-office connectivity. To maximize network reliability, the GWN7000 supports traffic load balancing and failover. The GWN7000 features an embedded controller and automated provisioning master that can setup and manage up to 300+ in-network GWN series WiFi Access Points. This can be easily operated through the product's intuitive web browser user interface, which also offers a central panel to monitor and control the entire network. The GWN7000 also includes an advanced 7-layer network/application monitoring capability based on DPI (Deep Packet Inspection) technology to securely monitor all network activity.



**Gigabit**  
7 Gigabit ports  
(2 WAN + 5 LAN)



**VPN**  
Hardware accelerated  
VPN including PPTP, L2TP/  
IPSec and OpenVPN



**300**  
access points  
Embedded controller to manage  
300+ GWN WiFi APs



**Multi WAN**  
Multi WAN ports with load  
balancing and failover  
to maximize connection  
reliability



**Web interface**  
Intuitive Web interface to  
centrally monitor/provision  
the entire network



**1 million packets/second routing & 10Gbps aggregate switching power**



**Peripheral support**  
Rich peripheral support  
(printer, NAS, file server, etc.)  
through USB ports

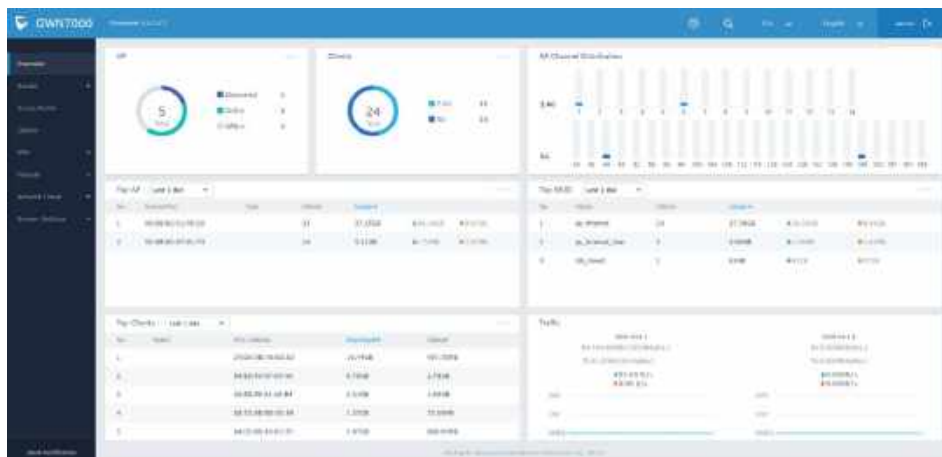


**DPI**  
7-layer network/ application  
management based on Deep  
Packet Inspection (DPI) for  
network monitoring



**Rich firewall features**  
including NAT, DMZ, Port Forwarding, SPI  
and UPnP

# Intuitive Management Interface and Status Monitoring



## Advanced Central Control

Intuitive Web-based central network management from any GWN7000 router.

## Network Manageability

Embedded controller to manage 300+ WiFi APs from a central interface without requiring a separate controller hardware/software.

## Automated Provisioning

Auto discovery & provisioning of in-network WiFi AP devices from any GWN7000 or GWN76xx WiFi AP.

## Connectivity Reliability

Multiple Gigabit WAN ports with load balancing and failover support to maximize network reliability and business continuity.

## High Performance

1M packets/second routing & 10Gbps switching power. Advanced QoS support for ultra-low-latency applications.

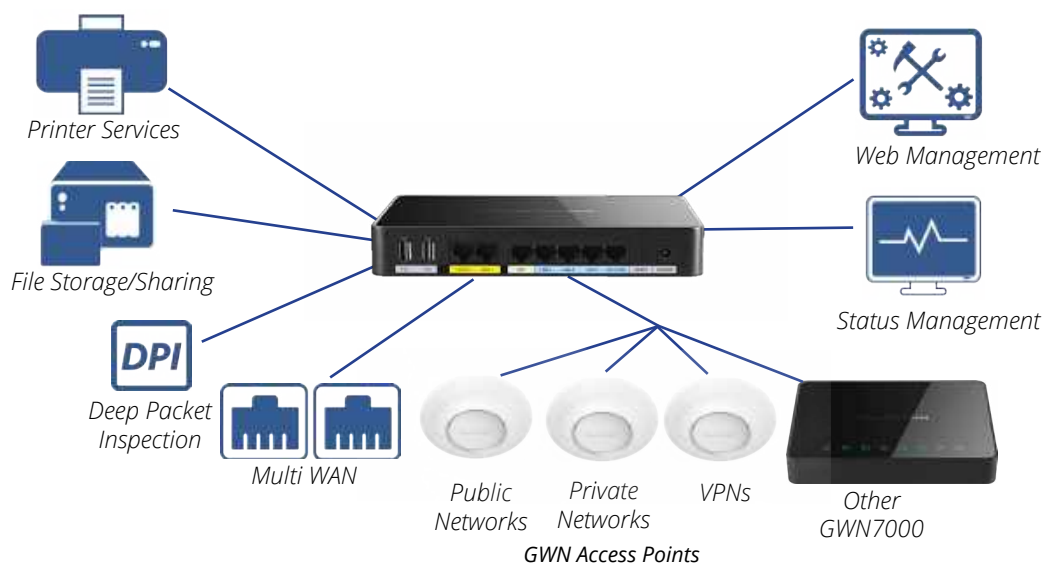
## Strong Security

Supports nearly all popular VPN flavors (IPSec/L2TP/OpenVPN/PPTP) to allow flexible VPN networks linking multi-sites, branch offices & home offices.

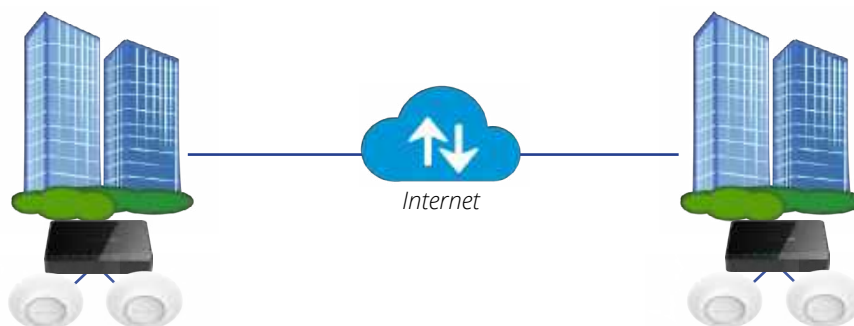
## Advanced Central Control

Intuitive Web-based central network monitoring from any GWN7000 router. 7-layer network/application monitoring based on Deep Packet Inspection (DPI) technology to monitor all network activity.

# Easy Setup and Management of Your Wireless/VPN Solution



# Powerful Site-to-Site VPN Tunnel Solution



# Specifications

<b>Network Interfaces</b>	2 x autosensing 10/100/1000 WAN Ports 1 x autosensing 10/100/1000 configurable as LAN or VoIP port 4 x autosensing 10/100/1000 LAN Ports
<b>WAN</b>	-DHCP -Static IP -PPPoE -Load balance & failover -Rule based routing
<b>LAN</b>	-DHCP server -DNS Cache -Multiple zones -VLAN
<b>Routing Performance</b>	Up to 1 million packets/second with 64-byte packet size
<b>USB</b>	-Printer sharing -File sharing
<b>Auxiliary Ports</b>	2x USB 3.0 ports, 1x Reset Pinhole
<b>Mounting</b>	Indoor wall mount, Desktop
<b>LED</b>	8 green-color LEDs for device tracking and status indication
<b>Network Protocols</b>	IPv4, IPv6, 802.1Q, 802.1p
<b>QoS</b>	VLAN, TOS, supports multiple traffic classes, filter by port, IP address, DSCP, and policing
<b>Firewall</b>	NAT, DMZ, Port Forwarding, SPI, UPnP
<b>VPN</b>	-Protocols: PPTP, L2TP/IPSec, OpenVPN -Client, Server or pass through
<b>Deep Packet Inspection (DPI)</b>	Yes, with 7-layer network/application monitoring
<b>Auto Provisioning Capability</b>	Embedded provisioning controller to manage up to 300+ GWN series WiFi APs
<b>Management</b>	Web, CLI
<b>Power</b>	802.3at PoE Included Power Supply: 12V/2A Max power consumption: 16W
<b>Environmental</b>	Operation: 0°C to 50°C Storage: -10°C to 60°C Humidity: 10% to 90% Non-condensing
<b>Physical</b>	Unit Dimensions: 200 x 136 x 37mm; Unit Weight: 570g Entire Package Dimensions: 324 x 163.5 x 54mm; Entire Package Weight: 930g
<b>Package Content</b>	GWN7000 Enterprise Router 12V/2A Power Adapter Quick Installation Guide GPL Guide
<b>Compliance</b>	FCC, CE, RCM, IC